

DATA SHEET: TEMBREAK 2 GS1000-NE MCCB

MCCB Electrical Characteristics to IEC 60947-2, JIS C 8201-2-1 ANN 1, AS/NZS 3947-2, NEMA AB-1

Frame reference	Quantity	Unit	Condition	TB2 1000
Max In (A) of Frame				1000
Model				S1000
Number of Poles				3, 4
Type				NE
Nominal current ratings				
	I_n	(A)	50°C	1000 ^①
Electrical characteristics				
Rated operational voltage	U_e	(V)	AC 50/60 Hz DC	690 -
Rated insulation voltage	U_i	(V)		800
Rated impulse withstand voltage	U_{imp}	(kV)		8
Ultimate breaking capacity (IEC, JIS, AS/NZS)	I_{cu}	(kA)	690V AC 525V AC 440V AC 400/415V AC 220/240V AC 250V DC	25 ^② 45 ^② 65 70 100 -
Service breaking capacity (IEC, JIS, AS/NZS)	I_{cs}	(kA)	690V AC 525V AC 440V AC 400/415V AC 220/240V AC 250V DC	20 ^② 34 50 50 75 -
Rated breaking capacity (NEMA)		(kA)	480V AC 240V AC	45 100
Rated short-time withstand current	I_{cw}	(kA)	0.3 Seconds	-
Protection				
Adjustable thermal, adjustable magnetic				■
Fixed thermal, fixed magnetic				
Microprocessor				
Utilisation category				A
Installation				
Front connection (FC)				-
Extension bar (FB)				■
Cable clamp (FW)				-
Rear connection (RC)				•
Plug-in (PM)				-
DIN rail mounting (DA)				-
Dimensions	height	(mm)		273
	width	(mm)	3 pole 4 pole	210 280
	depth	(mm)		103
Weight	weight	(kg)	3 pole 4 pole	11.0 14.8
Operation				
Direct Opening Action				■
Toggle operation				■
Door mounted (HS) / Breaker mounted handle (HB)				•
Motor operation (MC)				•
Endurance	Electrical Mechanical		690V AC	4,000 10,000
		cycles cycles		

① Not fully rated at 50°C, refer to temperature ratings

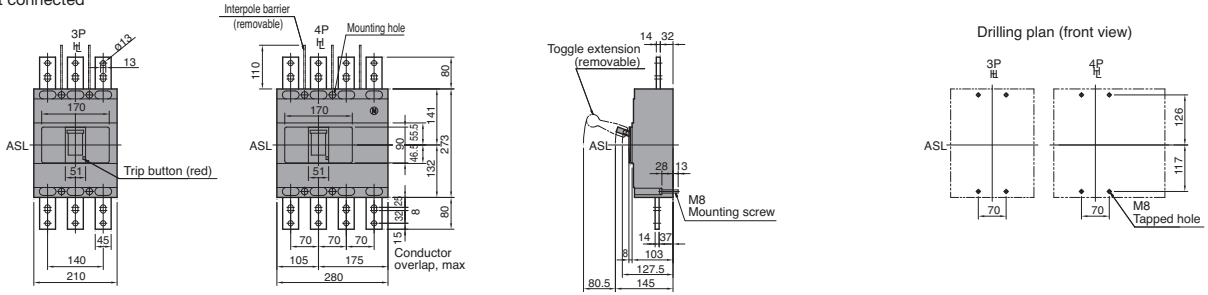
② MCCB cannot be used in IT systems at this voltage

DATA SHEET: TEMBREAK 2 GS1000-NE MCCB

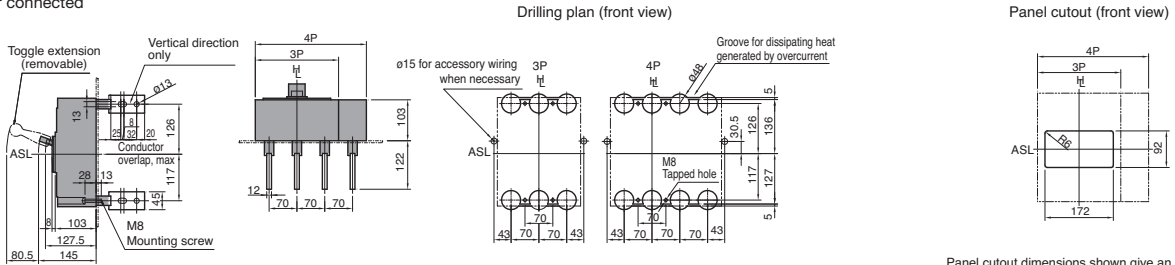
Outline Dimensions GS1000-NE

ASL: Arrangement Standard Line Ht: Handle Frame Centre Line

Front connected

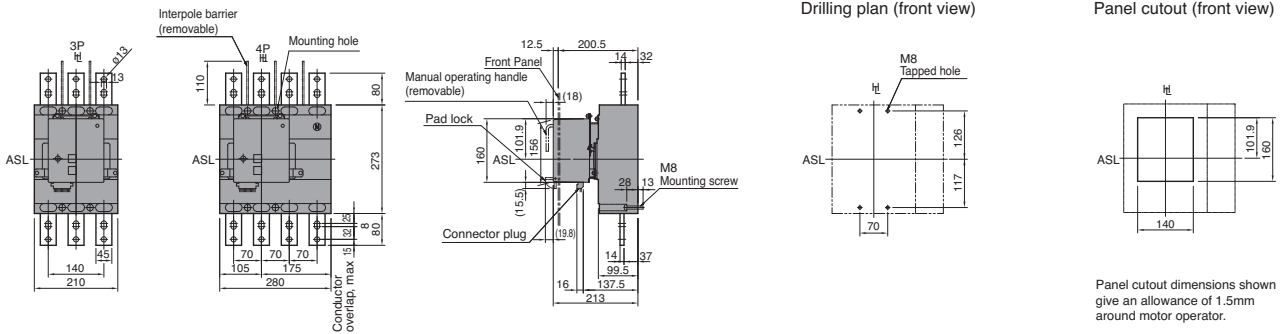


Rear connected



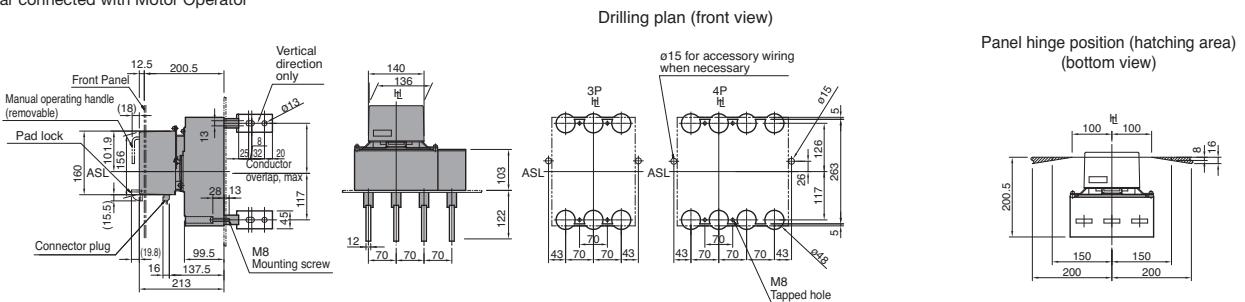
Panel cutout dimensions shown give an allowance of 1.0mm around the handle escutcheon.

Front connected with Motor Operator

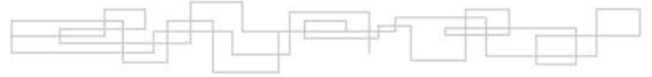


Panel cutout dimensions shown give an allowance of 1.5mm around motor operator.

Rear connected with Motor Operator



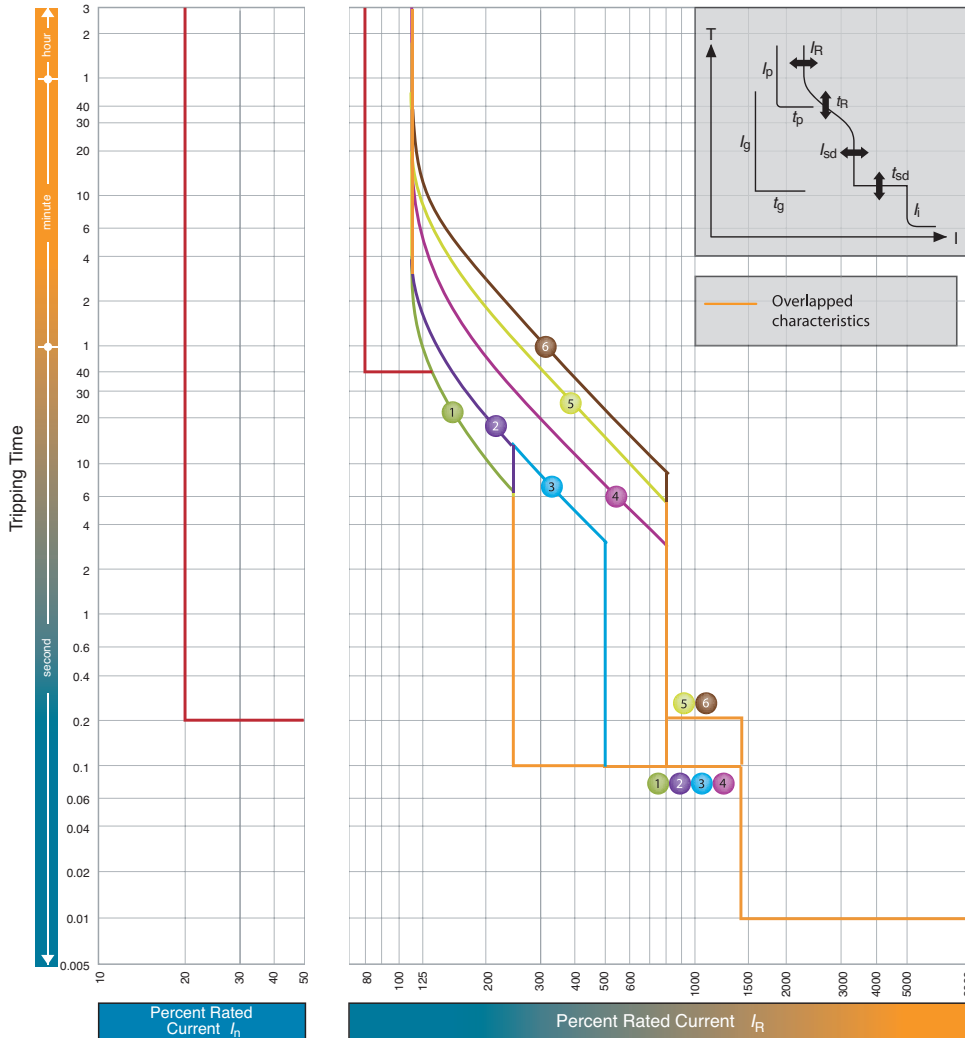
Note: Studs are factory installed in horizontal direction both on the line and load sides.



DATA SHEET: TEMBREAK 2 GS1000-NE MCCB

Time/Current Characteristic Curves

GS1000-NE



$I_n = 1000A$

I_R (A)									
LTD Pick-up current	I_R	x/I_n	0.4	0.5	0.63	0.8	0.9	0.95	1.0

Characteristics		No.	1	2	3	4	5	6
Standard	LT	t_R (s)	11	21	21	5	10	16
	ST	I_{sd} x/I_R	2.5			5		
		t_{sd} (s)	0.1			0.2		
INST	I_i x/I_R	14(Max: 10 x I_n) Note (1)						
Option	PTA	I_p x/I_R				0.8		
		t_p (s)				40		
	GF Note(3)	I_g x/I_n				0.2		
		t_g (s)				0.2		
NP	I_N x/I_R				1.0/0.5 Note(2)			
	t_N (s)				$t_N = t_R$			

Note

(1) I_i max. = 10 x I_n . (2) 1.0 x I_R or 0.5 x I_R can be selected. Characteristic of neutral protection (t_N vs. I_N) is identical to characteristic of phase protection (t_R vs. I_R). (3) When you specify GF on MCCBs with 3 poles the terminal block is automatically fitted to connect with the external neutral CT for 3 phases 4 wires system.



Dokument/document		Utgåva datum/edition date
Försäkran om överensstämmelse/ Declaration of conformity		2018-08-22
Avdelning/department		
Produkt/Product		
Ansvarig/prepared	Version	Sida/page
Robert Nydén	5	1 av/of 1

Manufacturer/Tillverkare: GARO AB
Box 203
S-335 25 GNOSJÖ
Sweden

Telephone: +46 (0)370 33 28 00
Internet: www.garo.se

Agent established within EC/Ombud etablerad inom EG

Telephone:
Internet:

Agent of equipment/Materielslag: Moulded Case Circuit Breaker, MCCB/Effektbrytare, MCCB

Trade Mark/Varumärke: GARO

Type Designation/Typbeteckning: GS160SCJ , SJ ,GS400-NE,NJ, 3- and 4-pole, GS250-NE, 3- and 4-pole GS800 , GS1000-NE

We hereby declare that our product fulfils the requirements of following EC directives/

Vi intygar härmed att vår produkt uppfyller krav enligt följande EU direktiv:

- The Low Voltage Directive (LVD) 2014/35/EU / Lågspänningsdirektivet (LVD) 2014/35/EU.**
- Electromagnetic compatibility (EMC) 2014/30/EU / Elektromagnetisk kompatibilitet (EMC) 2014/30/EU.**
- Radio Equipment Directive 2014/53/EU (RED) 2014/30/EU / Radiodirektivet (RED) 2014/53/EU.**
- RoHS Directive (RoHS) 2011/65/EU / RoHS direktivet (RoHS) 2011/65/EU.**
- No electromagnetic compatibility (EMC 2014/30/EU) immunity or emission tests are required on the assembly /** Produkten innehåller inte elektroniska apparater som påverkas enligt förbehållen enligt direktivet (EMC) 2014/30/EU.

The following harmonised standards (latest edition) or technical specifications which comply with good engineering practice in safety matters in force within the EC have been used in the design:/

Följande harmoniserade standarder (senaste utgåva) eller tekniska specifikationer som uppfyller god säkerhetsteknik praxis inom EG har använts i konstruktionen: **EN 60947-1 and/och 60947-2**

- The equipment confirms completely with the above stated harmonised standards or technical specifications./** Materielen överensstämmer helt med ovan angivna harmoniserade standarder eller tekniska specifikationer.

Or/eller

- The equipment confirms only partially with the above stated harmonised standards or technical specifications but complies with good practice in safety matters in force within the EC./** Materielen överensstämmer endast delvis med ovan angivna harmoniserade standarder eller tekniska specifikationer, men uppfyller god säkerhetsteknisk praxis inom EG.

We have product surveillance according to CENELEC's harmonised requirements, documents CCA-201.

GARO AB
Company/Företag

2018-08-22
Date/Datum

Sign/Underskrift

Product Manager/Produktchef
Position/Befattning

Robert Nydén
Sign in printed letters/Namnförtydligande